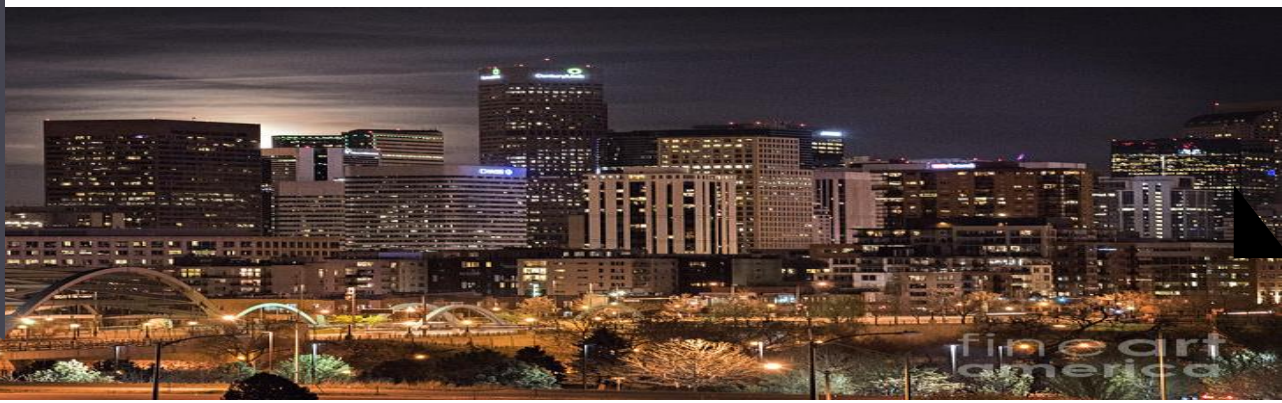




**IEG MONTHLY**  
**JANUARY 2019**  
*Our Programs!*



**PARTICIPANT ENGAGEMENT**  
**EMPOWERED LEVEL**

Accountable  
 Professional  
 Reliable  
 Entrepreneurial  
 Leader  
 Mastering Soft Skills  
 Strong Interpersonal Skills  
 Passionate and Collaborative  
 Experienced



**OPEN OPPORTUNITY-** Entrepreneurship,  
 Career Paths, College, Internships, Paid  
 Apprenticeships, IEG Community Mentors

**IEG LEVEL 1**  
**SUPPORTS**

Entrepreneurship Program  
 Career Development  
 Financial Literacy  
 Certification and Skills Training  
 Leadership Development  
 Mentorship Opportunities  
 Work Experience  
 Case Management



**EMPOWERMENT CONNECTORS-** *Clay Dean Electric, Amazon, Seattle Fish Co., CoorsTek, RK Mechanical, IEG Community Mentors, Corporate Connections*

**PARTICIPANT ENGAGEMENT**  
**DEVELOPMENTAL LEVEL**

Self - Motivated  
 Dependable  
 Reliable Transportation  
 Reliable Attendance  
 Developing Accountability  
 Learning and Developing Soft Skills  
 Developing Interpersonal Skills  
 Career Focused

**IEG Level 2&3**  
**Supports**

Gauge Reduction Services  
 Financial Health  
 Behavior Education  
 Youth Development  
 Job Training  
 College Knowledge  
 Case Management  
 Skill Development  
 Career Readiness  
 Job Placement  
 Mentorship  
 Resource Referrals  
 Wrap Around Services

**PARTICIPANT ENGAGEMENT**  
**ENTRY LEVEL**

Committed to Work  
 Gaining Experience  
 Seeking Growth  
 Developing Employment History  
 Developing Skills  
 Exploring Career Options  
 Exploring Motivation  
 Experiencing Economic Crises



**EMPOWERMENT CONNECTORS-** *ALSCO, Propak, Stone Works, Staffing Agencies, Pre-Apprenticeships, Volunteering*



# WORKFORCE DEVELOPMENT

*"IEG is Impacting Communities by Empowering People!"*

Garrett Crawford, Lead Case Manager

IEG's **Workforce Development Program** provides gang prevention and intervention services and community engagement and development through job training, job placement, career planning, and wraparound case management support to individuals who may face multiple barriers to successful employment, including but not limited to: gang affiliation, previous incarceration, gaps in employment history, and lack of education. By supporting high-potential adults and youth in developing career skills and obtaining gainful employment, IEG intervenes to disrupt systems of mass incarceration and school-to-prison pipelines plaguing the Near Northeast and Far Northeast regions of our city. Using our **3 E's** approach focused on **Education, Employment, and Entrepreneurship**, IEG reduces cycles of unemployment, crime, and recidivism allowing for proactive paths to better living conditions and life outcomes for those we serve.



“Our commitment to each student and family we serve is a lifetime commitment.”

— Nick Dawkins, Director



# YOUTH DEVELOPMENT

The **Youth Development Program** provides leadership development, internship placement, wraparound case management services, and access to **IEG Community Mentors** for youth (13-24) who face multiple barriers to graduation and/or college enrollment or barriers to gaining successful employment, this may include: attending a struggling school, poor academic performance, unstable family and/or housing, gang affiliation, and/or previous criminal involvement. IEG supports the youth in our community through our **3 E's** approach focused on **Education, Employment, and Entrepreneurship** to develop career plans and marketable career skills, helping them avoid the school-to-prison pipeline along with high-risk behaviors, guiding each student towards a quality education, better opportunities, expansive networks, and career success in adulthood.

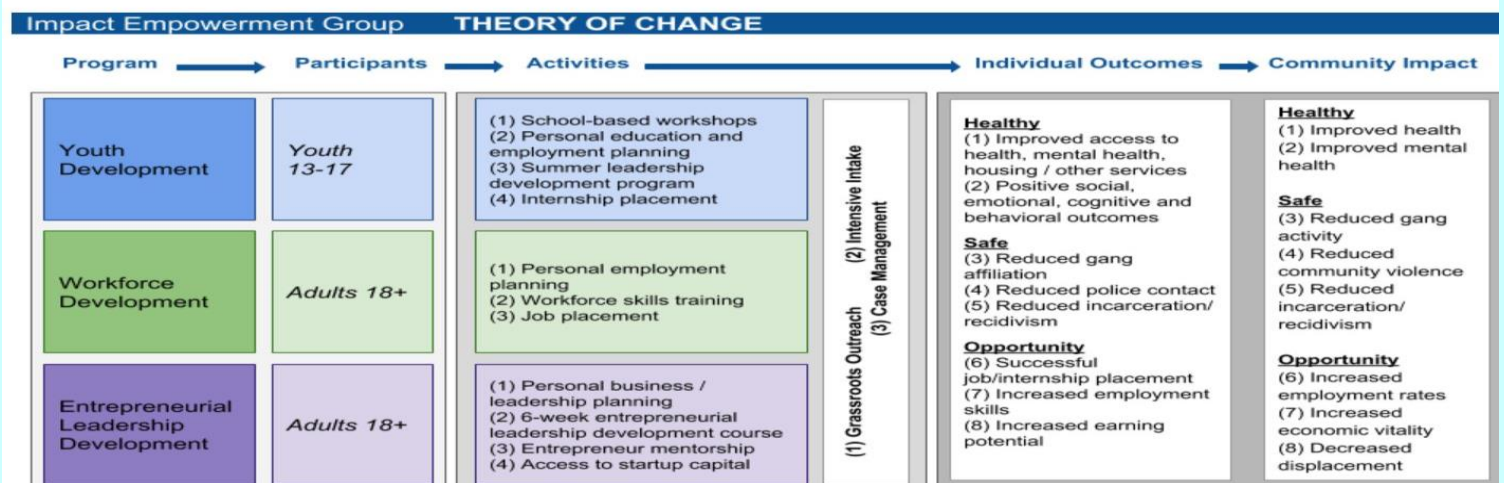


# ENTREPRENEURIAL LEADERSHIP DEVELOPMENT

The Entrepreneurial Leadership Development Program reduces gang participation and involvement by providing impacted communities access to entrepreneurial leadership training, startup support and business incubation for IEG program participants and local community entrepreneurs. The program helps community members develop the knowledge and skills to launch and/or grow businesses in Northeast Denver. In the near term, the program helps individuals develop their entrepreneurship skills and understand the small business market; obtain capital, advisement, and other resources critical for aspiring entrepreneurs; and launch and/or grow businesses in Northeast Denver. In the long term, these individual outcomes will contribute to improved conditions in Northeast Denver. Specifically, the program will increase economic mobility by creating new job opportunities in the community which will contribute to reduced violence, reduced incarceration and recidivism, and reduced community displacement.



## THEORY OF CHANGE & PROGRAM OVERVIEWS



# IEG Community Mentors

"It's important that we empower our community members with opportunities to give back" – Haroun Cowans, E.D.



The **IEG Community Mentors** focuses on our **3E's: Employment, Education, Entrepreneurship** inspiring, motivating, and empowering IEG alumni and participants to give back to their communities and larger world by leveraging their skills and personal experiences to support others who may be mirroring their paths, hurdles, and struggles. These mentors support IEG's program participants in every aspect of programming and make a lifelong commitment to supporting our clients through personalized services connected to our vast array of resources and connections. Each mentor plays a critical role in our mission to impact our community by empowering the people.



men·tor

['men,tôr, 'men,tər] 

NOUN

1. an experienced and trusted adviser.



**MBK**  
ALLIANCE  
OBAMA.ORG/MBKA

